

September 9, 1992
mot92565s jc

Introduced by: Sullivan

Proposed No.: 92-565

MOTION NO. 8776

A MOTION approving the work program for
the refinement of the Countywide Planning
Policies.

WHEREAS, the King County Council adopted Ordinance 10450
adopting the Countywide Planning Policies pursuant to RCW
36.70A.210; and

WHEREAS, the Ordinance describes further work required to
refine the Policies;

NOW, THEREFORE BE IT MOVED by the Council of King County:

1. The work programs included in Attachments 1, 2 and 3 are
approved and the county executive is requested to commence work
to insure timely completion.

Attachment 1: Summary work program to refine Countywide
Planning Policies;

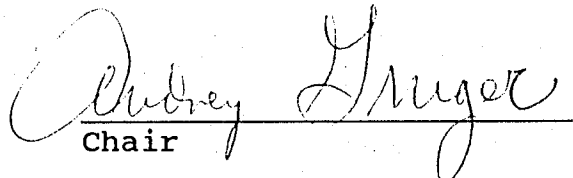
Attachment 2: Work programs and schedules for the Task Forces
on Rural Character, Affordable Housing and
Economic Development.

Attachment 3: Work program and schedule for the Supplemental
Environmental Impact Statement.


2. As required by Policy LU-26, the county executive is
requested to begin negotiations with each city in the
designated rural area to establish that city's urban growth
area. The cities are Black Diamond, Carnation, Duvall,
Enumclaw, North Bend, Snoqualmie and Skykomish.

PASSED this 14th day of September, 1992.

KING COUNTY COUNCIL
KING COUNTY, WASHINGTON


Chair

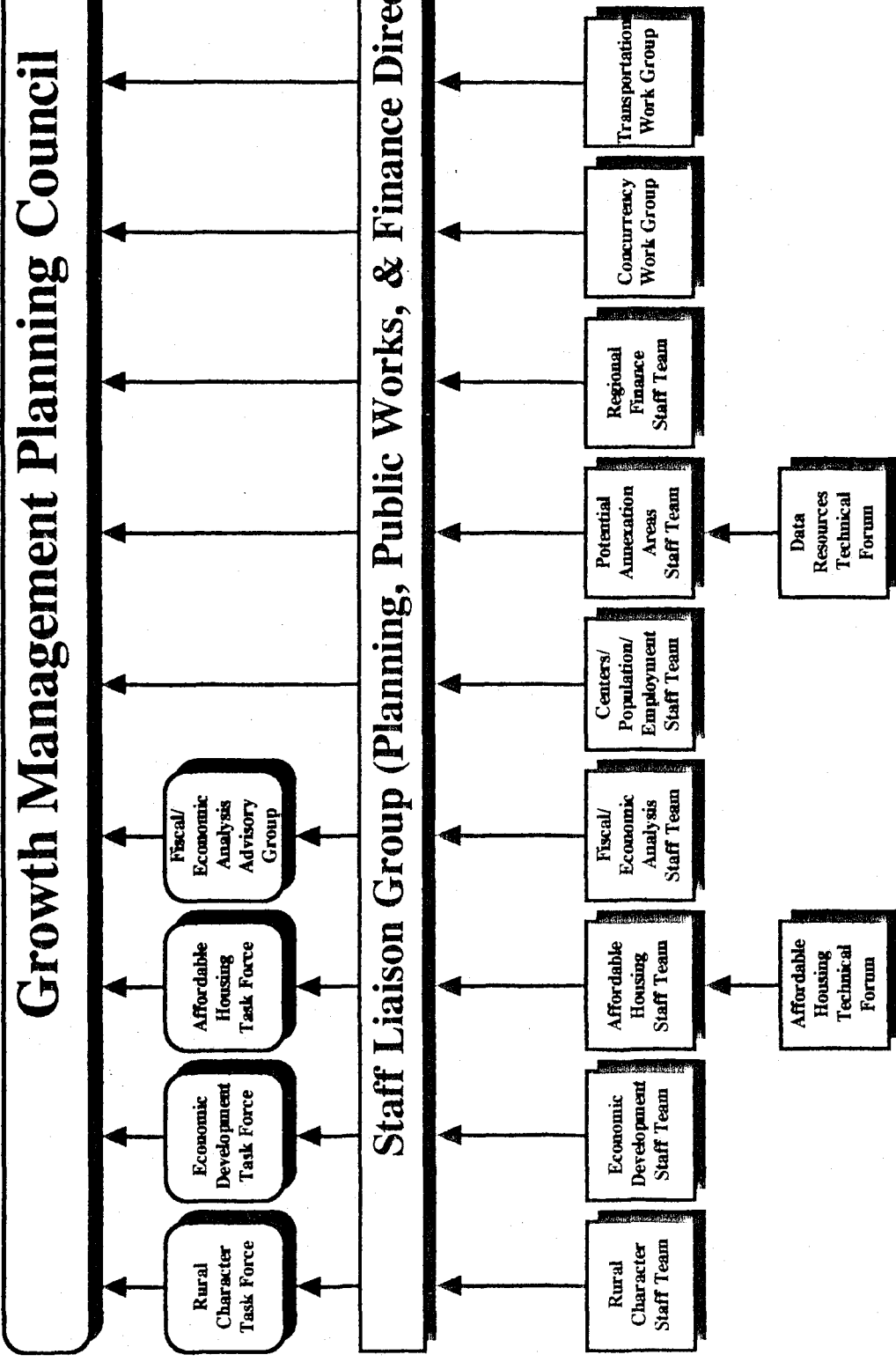
ATTEST:


Clerk of the Council

Countywide Planning Policies Work Program

TASK	1992					1993						
	A	S	O	N	D	J	F	M	A	M	J	J
1. INTERIM CONTROLS												
City Ratification						J						
Rural Interim Zoning	A										J	
Minimum Densities in Urban Areas	A										J	
Accessory and Manufactured Housing	A										J	
2. COUNTYWIDE POLICIES REQUIREMENTS												
	<i>SEIS Scope of Work</i>					<i>Development of Draft SEIS</i>					<i>Final SEIS</i>	
Population & Employment Analysis												
Population Distribution/ Targets - Net Dwelling Units	S	A				G						J
Employment Targets	S	A				G						J
Centers Designation												
Urban Centers		J	A			J	A					G
Manufacturing Centers		J	A			J	A					G
Rural Areas												
Rural Character	TF	S	A			G						G
Urban Growth Areas for Rural Cities						J	A					G
Rural Manual	S		A									
Transportation												
Develop Coordinated Los Standards						A						G
Reassessment of Land Use									A			
Affordable Housing												
Affordable Housing	TF	S	A			G					A	J
Economic Development												
GMPC Policies for Countywide Role	TF	S	A			G						G
Regional Industrial Siting Policy						TF	S					A
Urban Areas												
Potential Annexation Areas for Cities	S					G						A
Model Interlocal Agreement for Potential annexation Areas												A
Process for Disbanding BRB												
Financing												
Regional Financing Strategies	S					A						G
Concurrency												
Develop Concurrency Management Systems	S					A						G
Open Space												
Open Space Map												
Critical Areas												
Critical Areas Technical Committee												A
Siting												
Siting Public Capital Facilities												
3. PUBLIC INVOLVEMENT												
Public Involvement												
4. ORDINANCE REQUIREMENTS												
Fiscal analysis	S					A						G
SEIS		S				A						D
Technical Review of "Line" Study Areas	A					G						G
S - Scope of Work G - GMPC F - Final A - Analysis J - Jurisdictions TF - Task Force D - Draft												

PROCESS FOR REFINEMENT OF COUNTYWIDE PLANNING POLICY



Growth Management Planning Council
Task Forces' Work Programs

Completion Date

1. Rural Character (LU-9)

- a. Task Force appointed and work program approved 9/9
- b. Background and issue identification 9/9
 - Review rural policies from KC Comprehensive Plan
 - Review current and proposed zoning code issues
 - Status of rural area (existing lot patterns, current uses, connection to resource industry)
- c. Gather information from rural residents, resource industry and rural developers: what is rural character, how is it achieved (clustering/villages, TDRs and PDRs, other) 9/16
 - Presentations and field trip
- d. Prepare recommendations on rural policies 9/23
 - Definition of rural
 - Tools for implementation
 - Countywide Planning Policies amendments

2. Economic Development (ED-1)

- a. Task Force appointed and work program approved 9/9
- b. Background and issue identification 9/9
 - Review Countywide Policies for economic development impacts
 - Review previously developed economic development policies
- c. Prepare recommendations on policies 9/23
 - Countywide Planning Policies amendments
 - Implementation and monitoring strategies

3. Affordable Housing (AH-1)

- a. Task Force appointed and work program approved 9/9
- b. Background and issue identification 9/9
 - Review census data on housing needs, on assisted housing and local governments efforts
 - Review proposed scope of guidelines for distribution of affordable housing.
- c. Prepare recommendations on policies, guidelines and possible actions 9/23
 - guidelines for distribution of affordable housing (definition of low and moderate-income housing, countywide need, criteria for jurisdictions to determine range and amount of affordable housing, criteria for measuring performance, including efforts to encourage and actual units produced.
 - menu of actions, both land use and funding strategies, that jurisdictions can adopt to encourage affordable housing.

jc
8/6/92
from PP&R drafts

- Product:**
- detailed scope of work
 - public/private consensus/review supporting that scope

7. Assemble the panel of experts based on the scope of work. **September 8 - October 12**

8. Conduct first discussion with panel. **October 26**

Comment: This will be a focused, interactive discussion between the advisory committee and the panel of experts about issues identified through the parameter paper and the scope of work. The goal is to identify any fatal flaws which may result from the Countywide Policies.

9. Conduct second discussion with panel. **November 10**

Comment: The purpose of the second discussion is to attempt to address issues which may have been raised in the first discussion, with all the participants having had the opportunity for reflection. The purpose will also be to identify the indicators to be monitored over the course of Policies implementation in the region. The second meeting may also be an opportunity to get closure on some issues, or at least to identify areas of consensus and areas of disagreement.

10. Panel of experts produces report. **December 14**

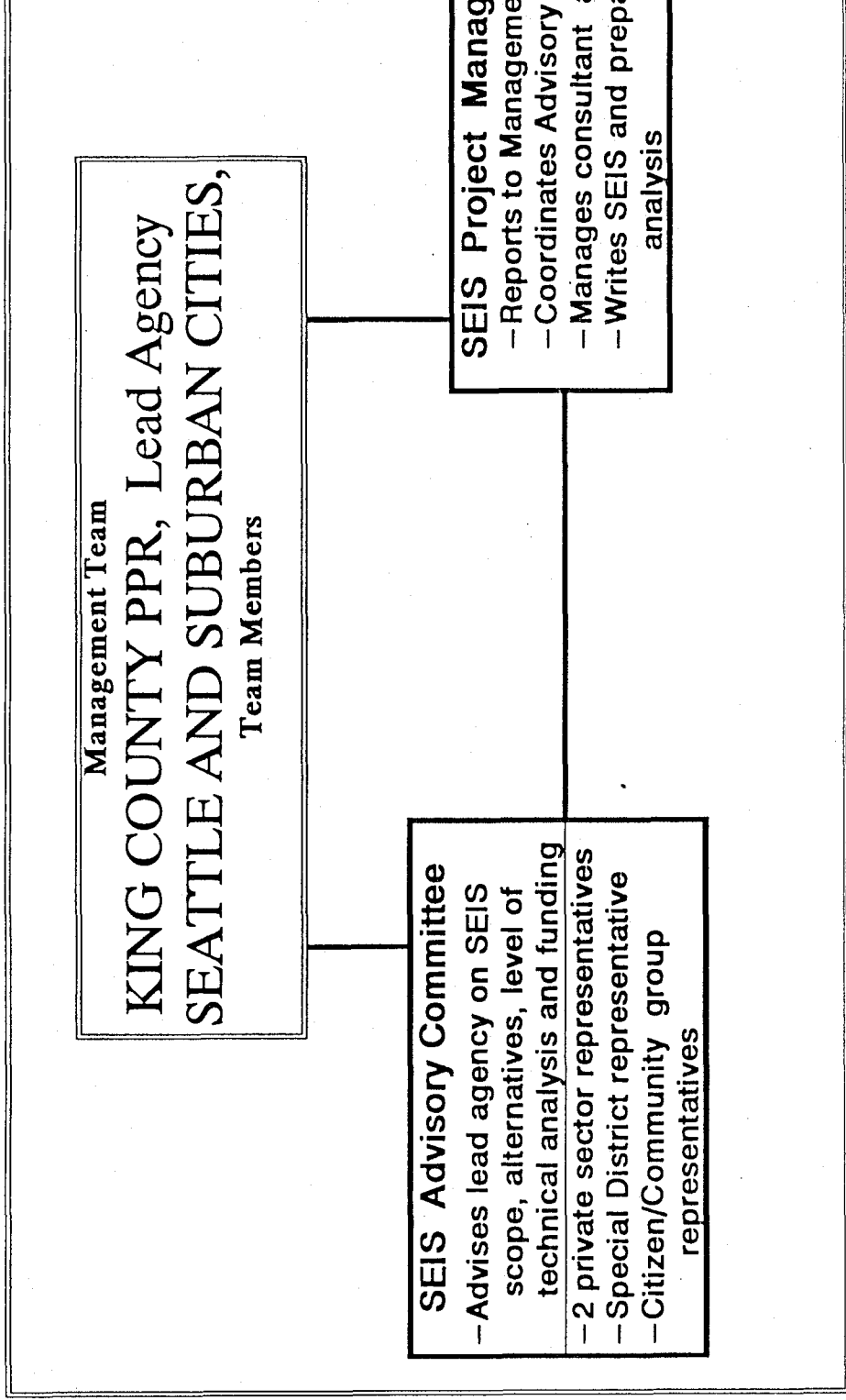
11. Transmit report to GMPC, KCC, city officials. **December 31**

13. GMPC uses report as part of the Phase II review process. **January 1993**

Comment: In conjunction with other work products from Countywide Policies, GMPC may recommend modifications to KCC. Fatal flaw analysis will be used to direct "course corrections" for Countywide Policies.

Countywide Planning Policies

SUPPLEMENTAL ENVIRONMENTAL IMPACT STATEMENT



COUNTYWIDE PLANNING POLICIES

SEIS DRAFT SCHEDULE

Sept. 15-17	Interjurisdictional staff scoping meeting
Sept. 21	Interjurisdictional staff meets with SEIS Advisory Committee to review scoping
Sept. 25	RFP issued for SEIS Project Manager/Consultant
Nov. 17	SEIS Project Manager/Consultant hired
Dec. 1	Alternatives presented to Advisory Committee and Management Team
Dec. 2, 3	Two-three public meetings on SEPA alternatives
Dec. 16	SEPA alternatives presented to GMPC for approval
Mar 30	Draft SEIS issued for public review and sent to GMPC

FISCAL/ECONOMIC ANALYSIS WORK PROGRAM

The following is an outline of the tasks required to conduct the Council-mandated Fiscal/Economic Analysis of the Countywide Planning Policies. A brief description of each task is given with a tentative timeline. The Office of Financial Management (OFM) will provide the project management for this workload, in conjunction with an interdepartmental team from both the Executive and Legislative branches of the County.

TASK	TIMELINE
1. Form a County interdepartmental staff team.	Completed
2. Form a public/private advisory committee to guide the scoping of the Fiscal/Economic Study.	July 20 - September 8
Comment: This group will include County, city, business, labor, education, good government, environmental, and citizen representation. The challenge will be to keep the group to a manageable size, perhaps 17 members.	
3. Develop draft parameters for discussion with panel of economic experts.	Completed
Comment: The interdepartmental team will produce a paper identifying the parameters for a structured set of discussions with a panel of local and national economic experts.	
4. Brief KCC's GMHE committee on fiscal/economic work programs.	September 9
5. First Advisory Committee meeting.	September 28
6. Finalize the parameter paper with the Advisory Committee, produce scope of work.	September 28 - October 12
Comment: The fiscal/economic analysis will be primarily qualitative in nature. Key goal of the study is to identify any fatal flaws which require modification of the policies.	

The scope of work will ask the panel of experts to identify the probable fiscal and economic effects of the Countywide Policies on individuals (e.g., demographic or income groups) and on businesses. The panel will be asked to clearly explain the nexus of the policies to the fiscal and economic impacts on individuals and businesses. How do the policies directly limit or expand individual and business choices which result in fiscal and economic impacts? Will the policies impact the cost of living for individuals and businesses?